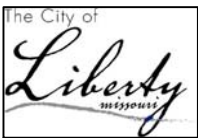


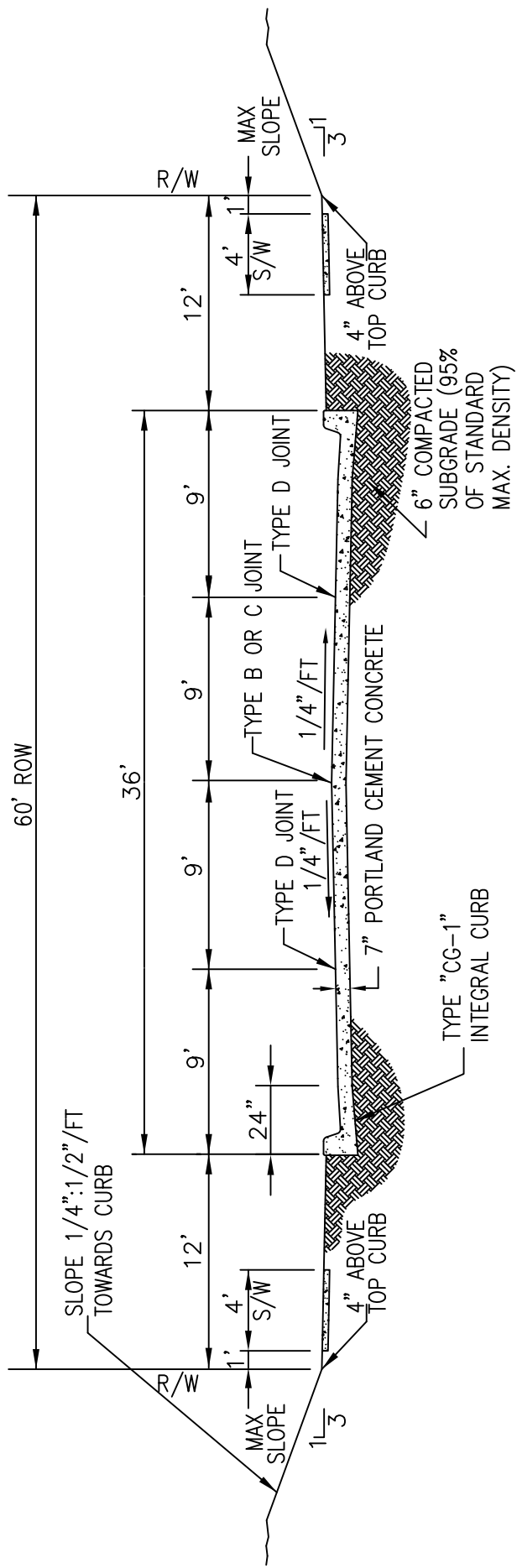
REV 2009



CITY OF LIBERTY, MO
DEPARTMENT OF
PUBLIC WORKS

CONCRETE PAVEMENT
CROSS SECTION &
JOINT LOCATIONS

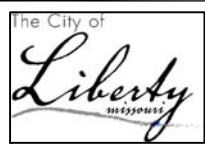
D15-1



NOTE:
 SIDEWALKS TO BE CONSTRUCTED
 ALONG COLLECTOR AS PART
 OF PROJECT.

COLLECTOR / COMMERCIAL STREET DETAIL

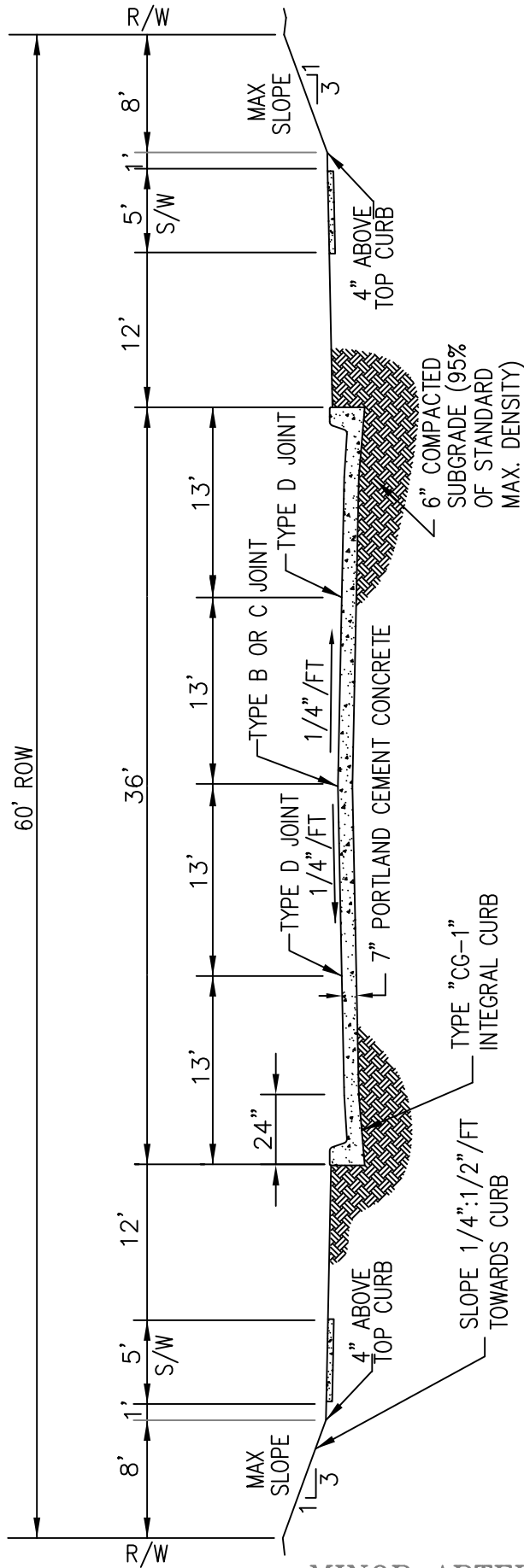
REV 2009



CITY OF LIBERTY, MO
 DEPARTMENT OF
 PUBLIC WORKS

CONCRETE PAVEMENT
 CROSS SECTION &
 JOINT LOCATIONS

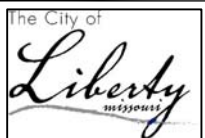
D15-2



- NOTE:
- DESIGN GEOMETRICS TO BE APPROVED BY THE CITY ENGINEER FOR EACH INDIVIDUAL PROJECT.
 - SIDEWALKS TO BE CONSTRUCTED ALONG MINOR ARTERIAL AS PART OF PROJECT.

NOTE:

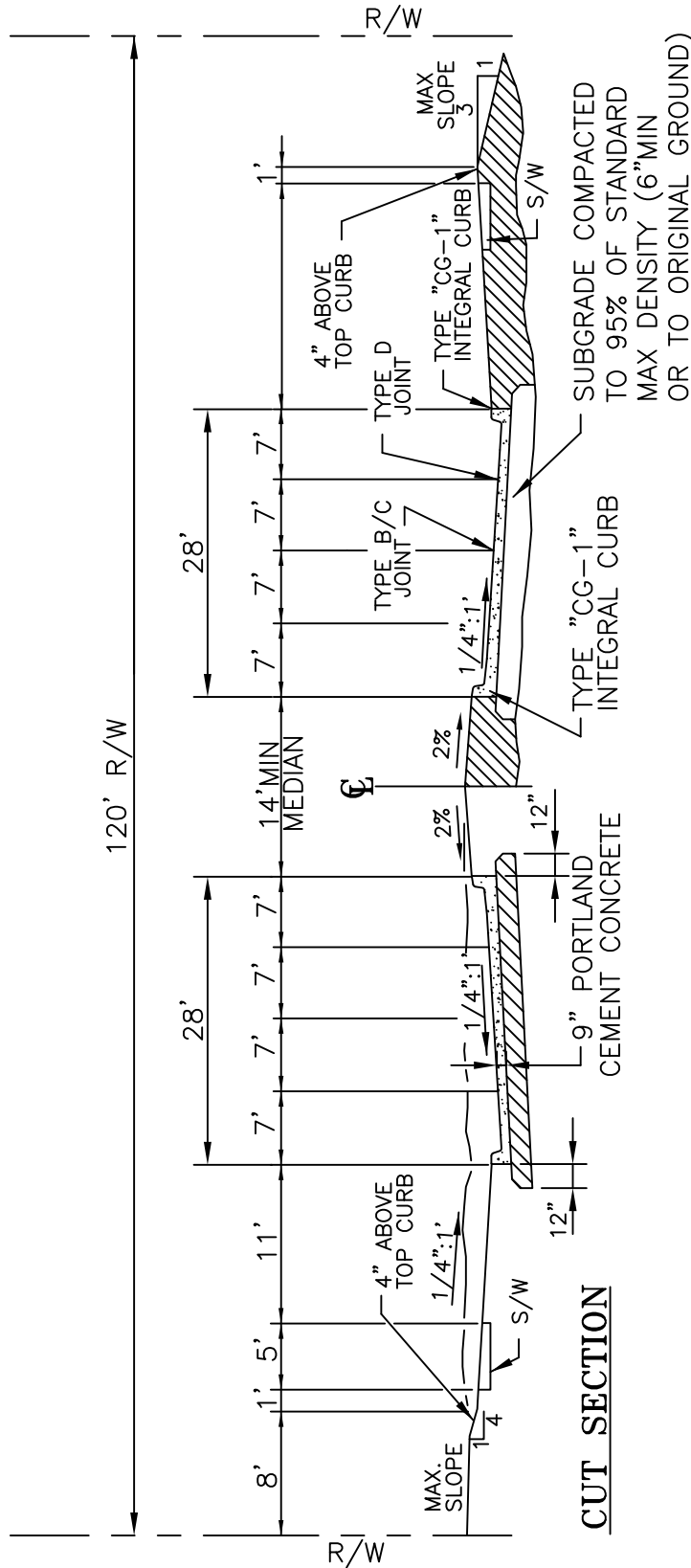
MINOR ARTERIAL STREET DETAIL REV 2009



CITY OF LIBERTY, MO
DEPARTMENT OF
PUBLIC WORKS

CONCRETE PAVEMENT
CROSS SECTION &
JOINT LOCATIONS

D15-3



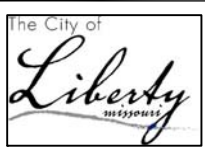
CUT SECTION

FILL SECTION

NOTE:
 DESIGN GEOMETRICS TO BE APPROVED
 BY THE CITY ENGINEER FOR EACH
 INDIVIDUAL PROJECT.

MAJOR ARTERIAL STREET DETAIL

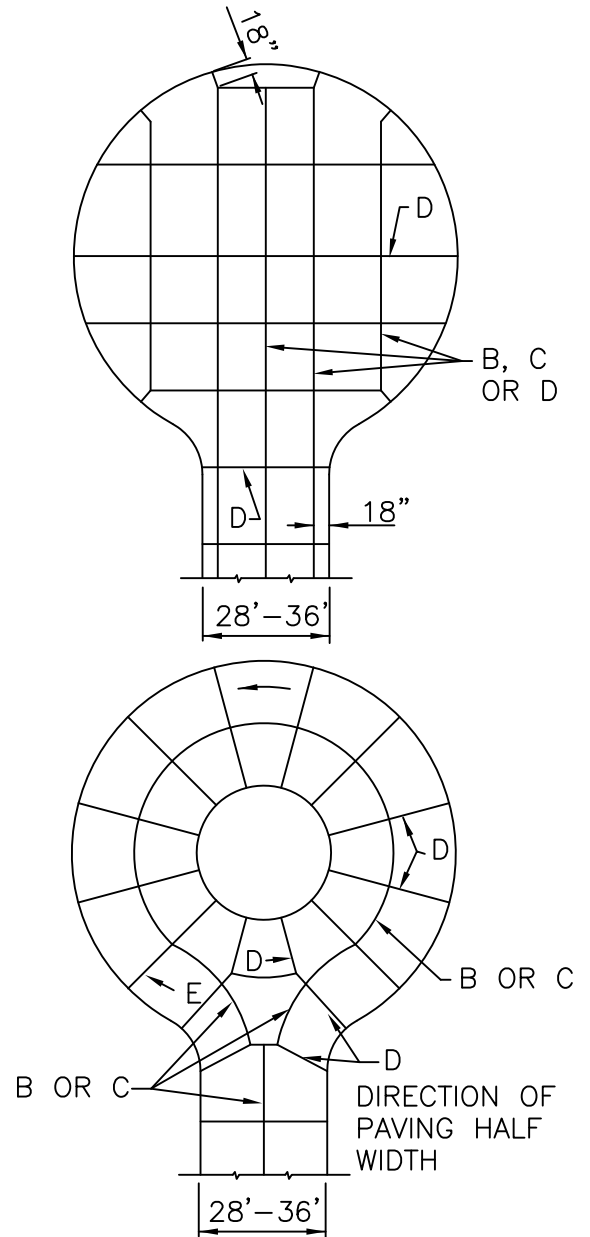
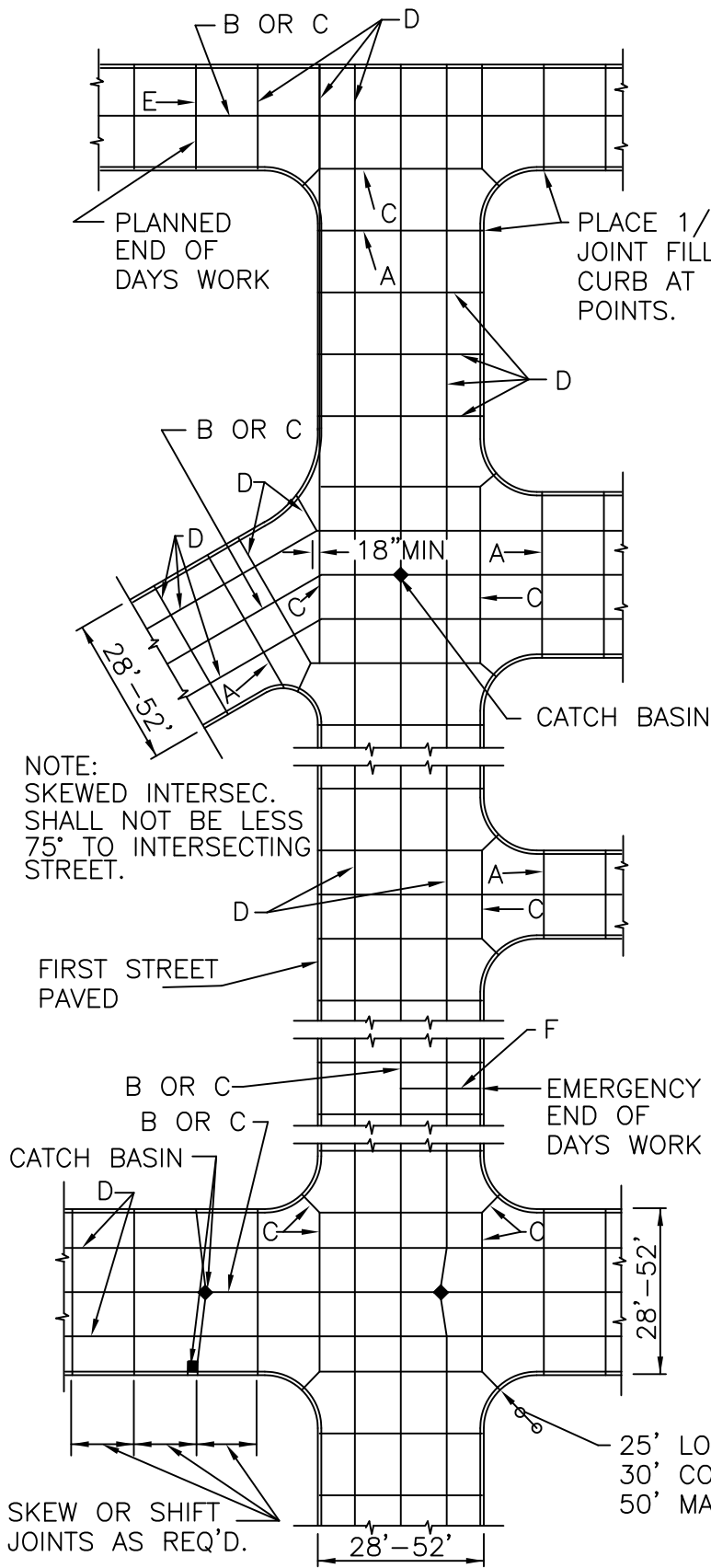
REV 2009



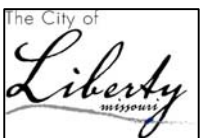
CITY OF LIBERTY, MO
 DEPARTMENT OF
 PUBLIC WORKS

CONCRETE PAVEMENT
 CROSS SECTION &
 JOINT LOCATIONS

D15-4



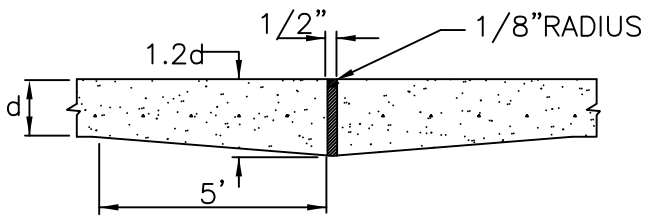
REV 2009



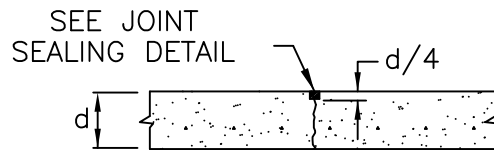
CITY OF LIBERTY, MO
DEPARTMENT OF
PUBLIC WORKS

CONCRETE PAVING
JOINT LOCATIONS

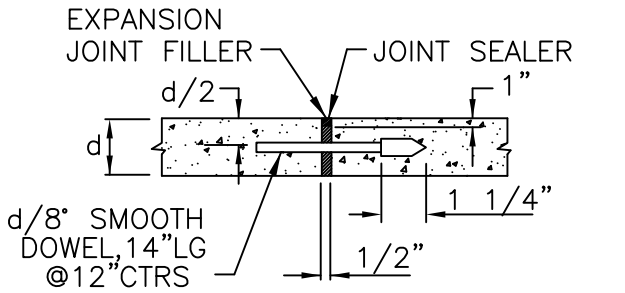
D15-5



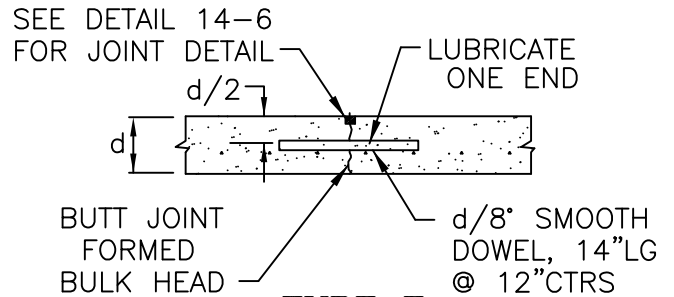
TYPE A
EXPANSION JOINT



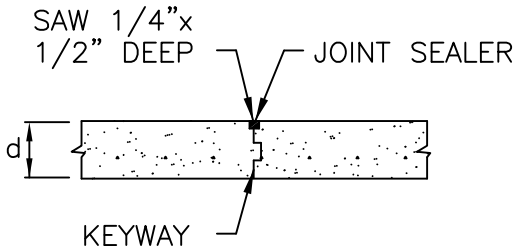
TYPE D
SAWED LONGITUDINAL OR TRANSVERSE



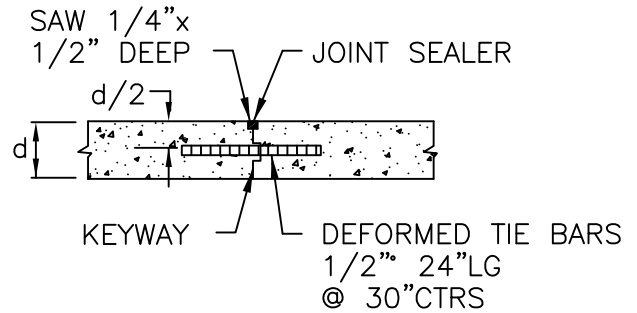
TYPE A
ALTERNATE EXPANSION JOINT



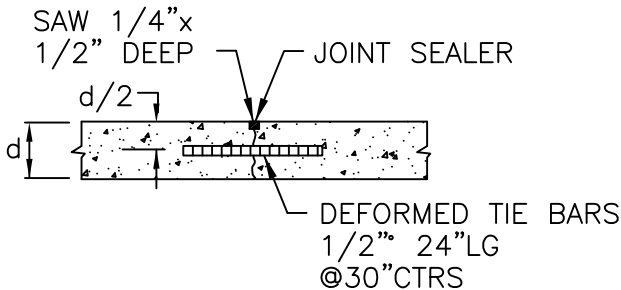
TYPE E
PLANNED TRANSVERSE
CONSTRUCTION JOINT
(USED AT NORMAL JOINT SPACING)



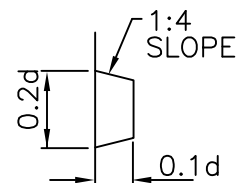
TYPE B
LONGITUDINAL CONSTRUCTION JOINT



TYPE F
EMERGENCY TIED TRANSVERSE
CONSTRUCTION JOINT
(USED AT MIDDLE THIRD NORMAL
JOINT SPACING)

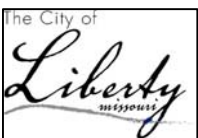


TYPE C
TIED BUTT LONGITUDINAL
CONSTRUCTION JOINT



KEYWAY FOR TYPE B & F
CONSTRUCTION JOINT

REV 2009



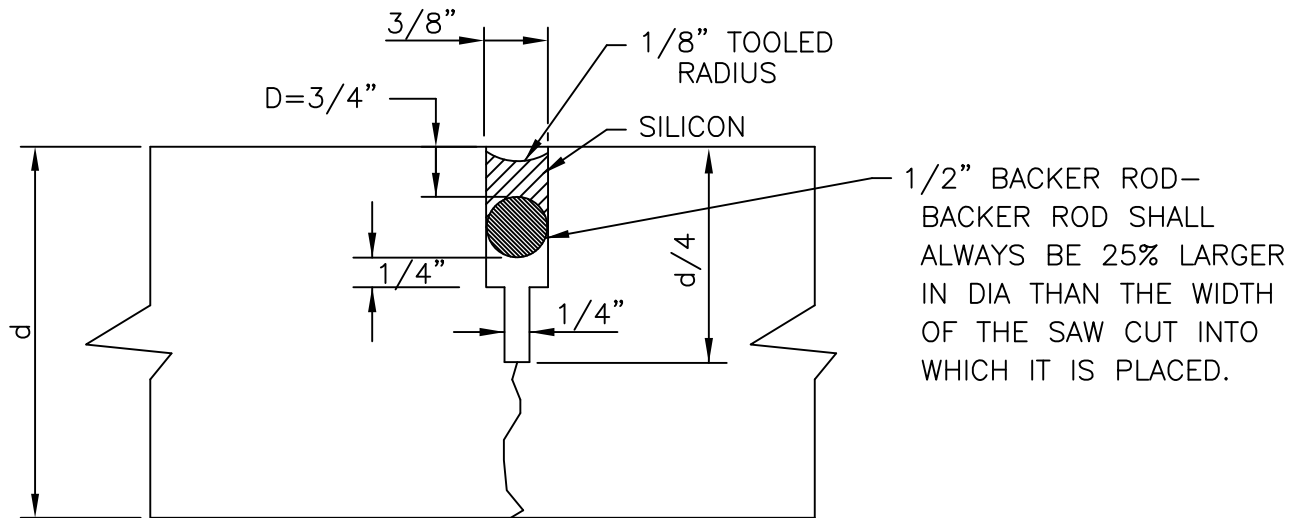
CITY OF LIBERTY, MO
DEPARTMENT OF
PUBLIC WORKS

CONCRETE PAVING
JOINT DETAILS

D15-6

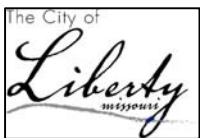
NOTES:

1. SILICONE JOINT SEALING MATERIAL SHALL BE COLD-APPLIED, SINGLE COMPONENT TYPE CONFORMING TO REQUIREMENTS OF FED. SPEC.TT-S-1543, DOW CORNING "888 SILICONE HIGHWAY JOINT SEALANT". SEALING MATERIAL SHALL BE PRESSURE MACHINE APPLIED IN ACCORDANCE WITH THE SEALING MATERIAL MANUFACTURER'S RECOMMENDATIONS. THE MATERIAL FURNISHED FOR THE BACKER ROD SHALL BE A RESILIENT, CLOSED CELL POLYETHYLENE FOAM ROD AS RECOMMENDED BY THE MANUFACTURE OF THE SEALANT.
2. d = DEPTH OF SLAB
3. D = DEPTH TO TOP OF BACKER ROD. DEPTH "D" SHALL ALWAYS BE TWICE THE WIDTH OF THE JOINT.



TYPICAL SECTION

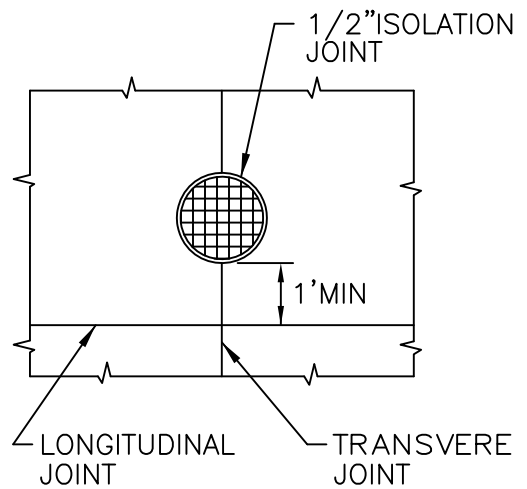
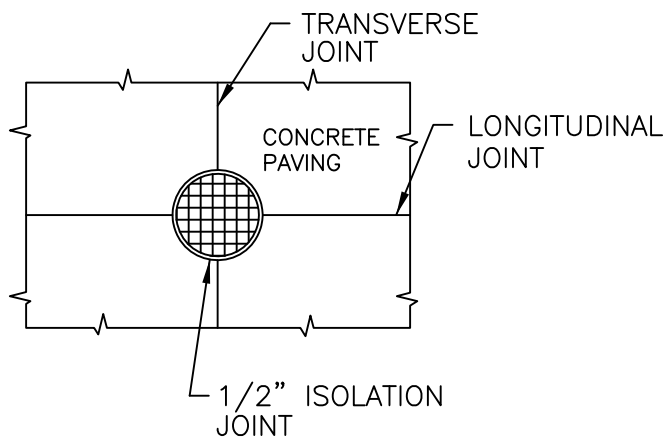
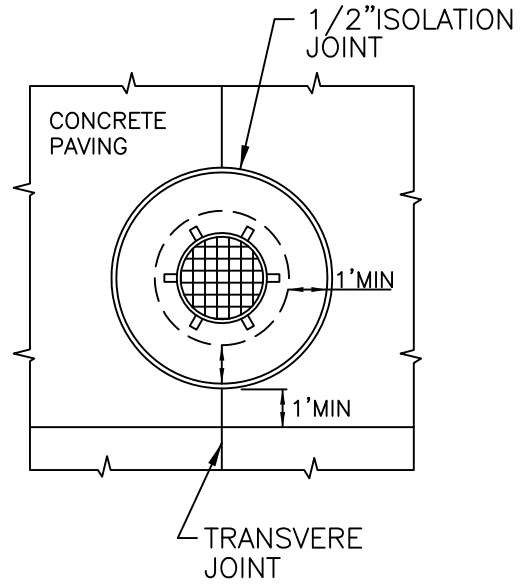
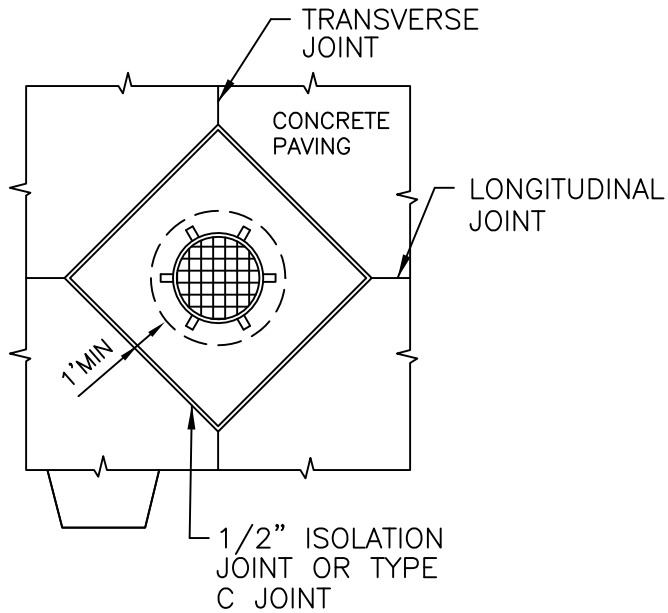
REV 2009



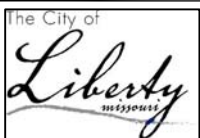
CITY OF LIBERTY, MO
DEPARTMENT OF
PUBLIC WORKS

CONCRETE PAVING
JOINT SEALING
DETAILS

D15-7



REV 2009



CITY OF LIBERTY, MO
DEPARTMENT OF
PUBLIC WORKS

CONCRETE PAVING
ISOLATION JOINT
DETAILS

D15-8