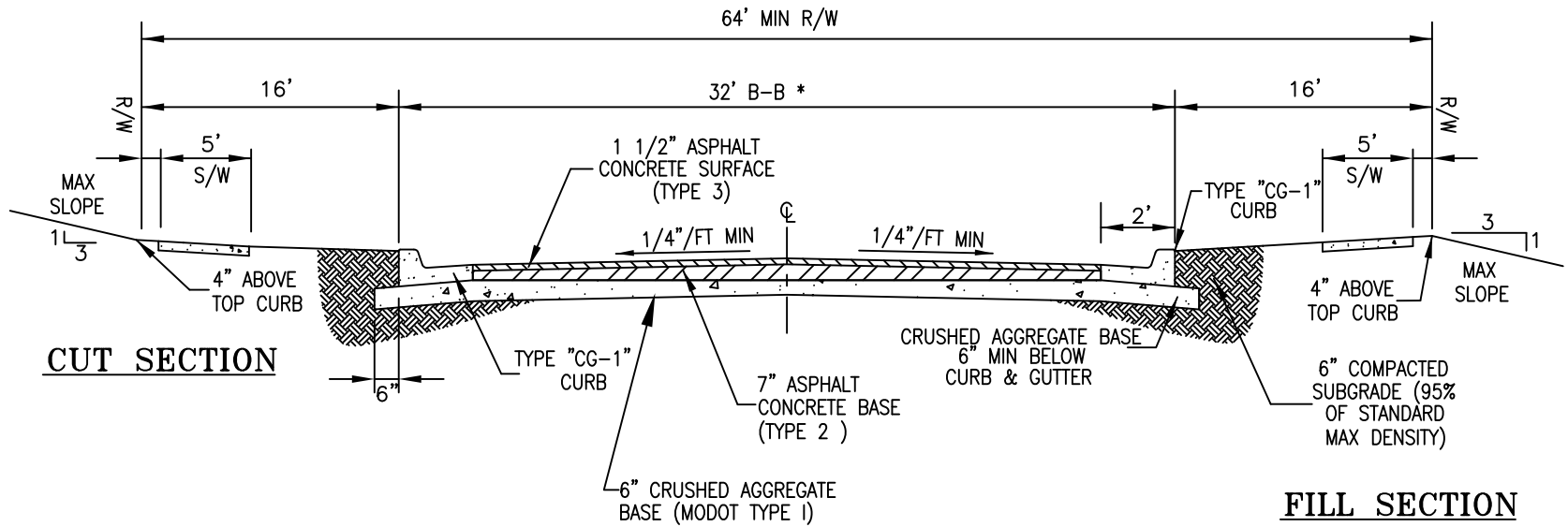


NOTE:

UNLESS OTHERWISE APPROVED IN WRITING BY THE CITY ENGINEER, BASE MIX SHALL BE TYPE 2.

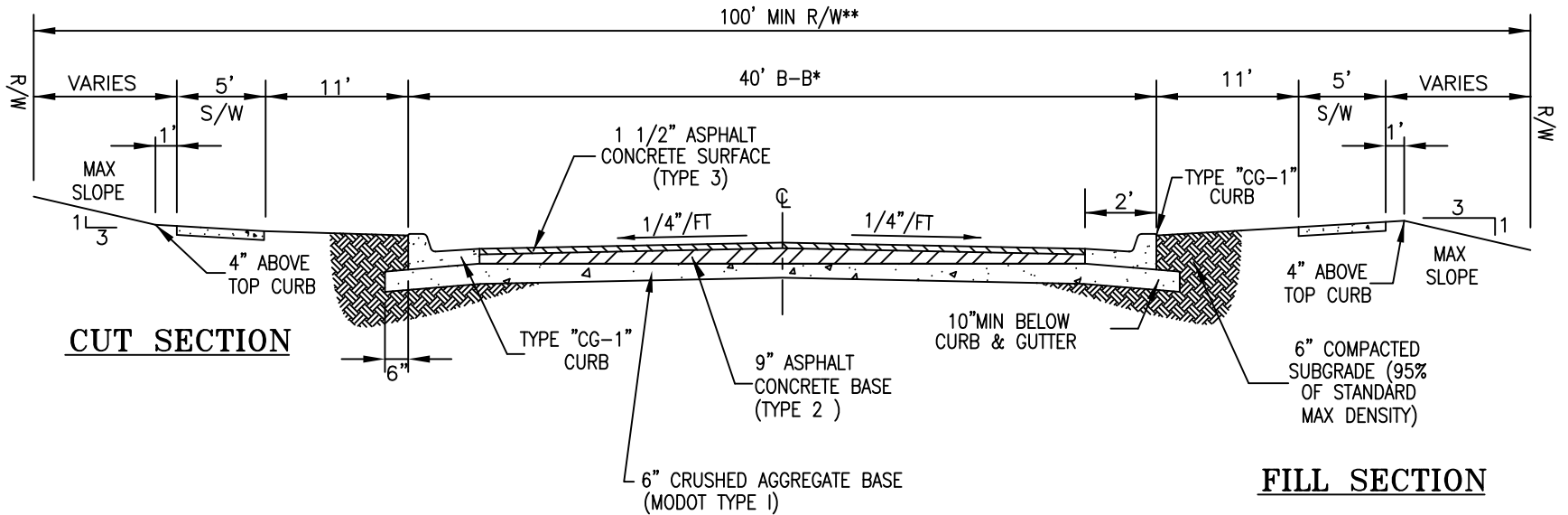
* WIDTH MAY VARY BASED ON APPROVED SUBDIVISION DESIGN.



NOTE:

1. UNLESS OTHERWISE APPROVED IN WRITING BY THE CITY ENGINEER, BASE MIX SHALL BE TYPE 2.
2. 5' WIDE SIDEWALKS TO BE CONSTRUCTED ALONG COLLECTOR AS PART OF PROJECT.

* WIDTH MAY VARY BASED ON APPROVED SUBDIVISION DESIGN.

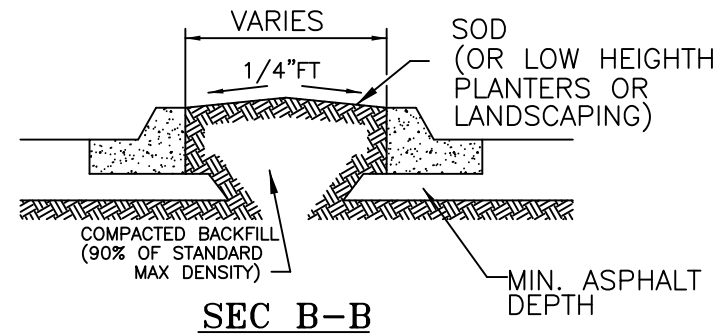
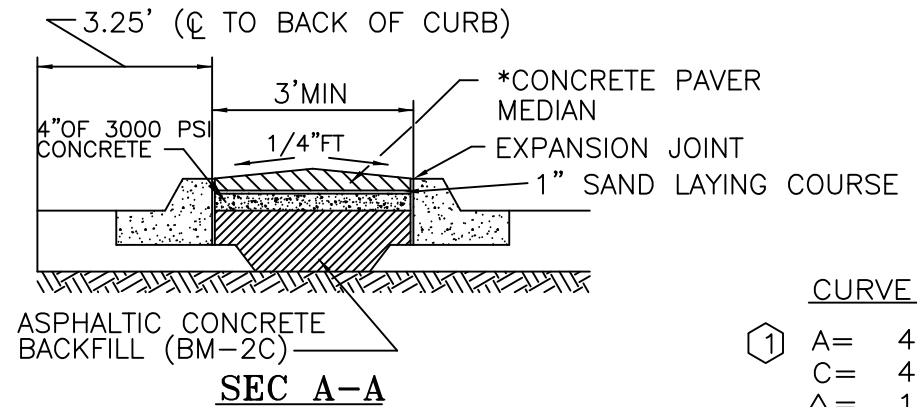
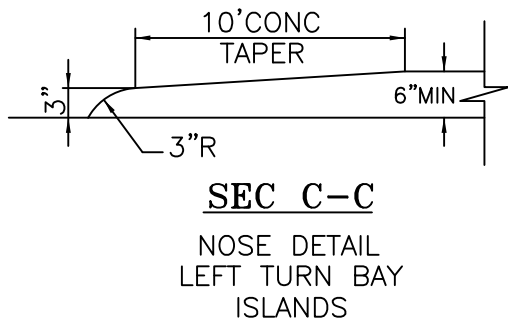
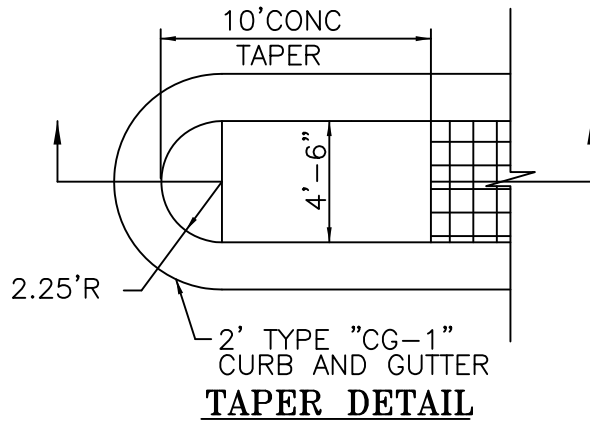
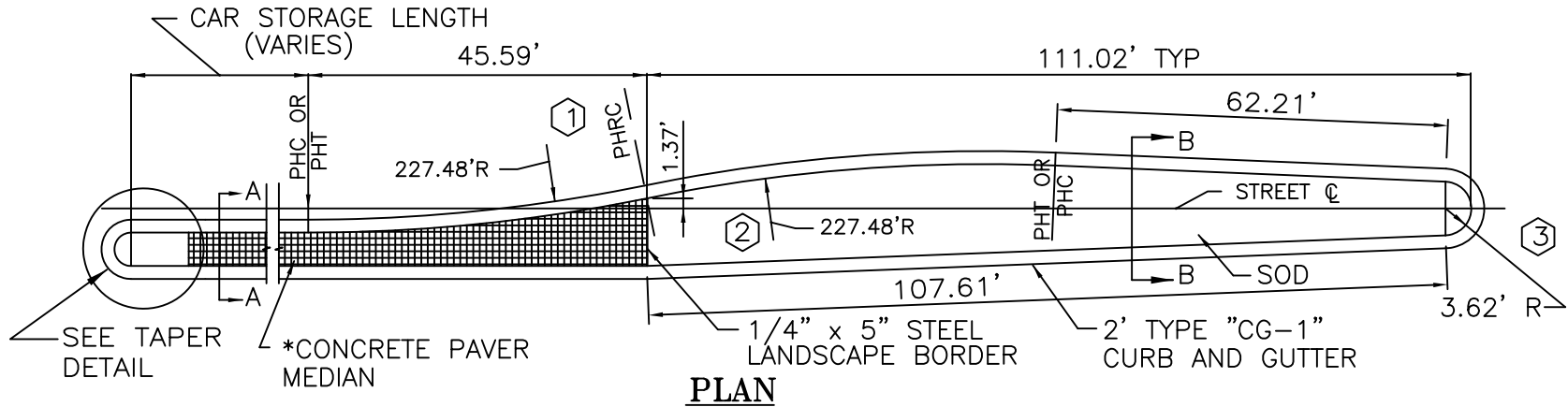


NOTE:

1. DESIGN GEOMETRICS TO BE APPROVED BY THE CITY ENGINEER FOR EACH INDIVIDUAL PROJECT.
2. UNLESS OTHERWISE APPROVED IN WRITING BY THE CITY ENGINEER BASE MIX SHALL BE TYPE 2.
3. SIDEWALKS TO BE CONSTRUCTED ALONG MINOR ARTERIAL AS PART OF PROJECT.

* WIDTH MAY VARY BASED ON APPROVED SUBDIVISION DESIGN.

** REQUIRED RIGHT-OF-WAY WIDTH SHALL BE DETERMINED ON A CASE BY CASE BASIS.



CURVE INFO

①	A=	45.67
	C=	45.59
	Δ =	11.50
	R=	227.48
	T=	22.91

②	A=	45.67
	C=	45.59
	Δ =	11.50
	R=	227.48
	T=	22.91

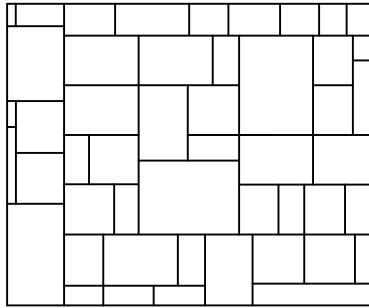
③	A=	11.65
	C=	7.23
	Δ =	175.69
	R=	3.62
	T=	96.16

* SEE SPEC DRAWING D14-4a FOR PAVER DETAILS

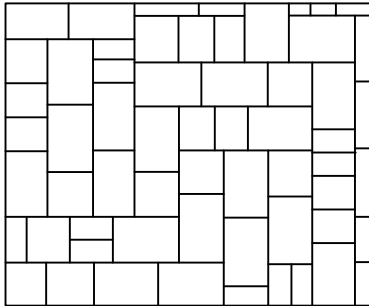
ALL PAVERS SHALL BE MANUFACTURED BY PAVESTONE AND SHALL CONFORM TO THE FOLLOWING SPECIFICATIONS:

THE PATTERN SHALL BE MADE UP AND LAID CONFORMING TO EITHER OF THE FOLLOWING:

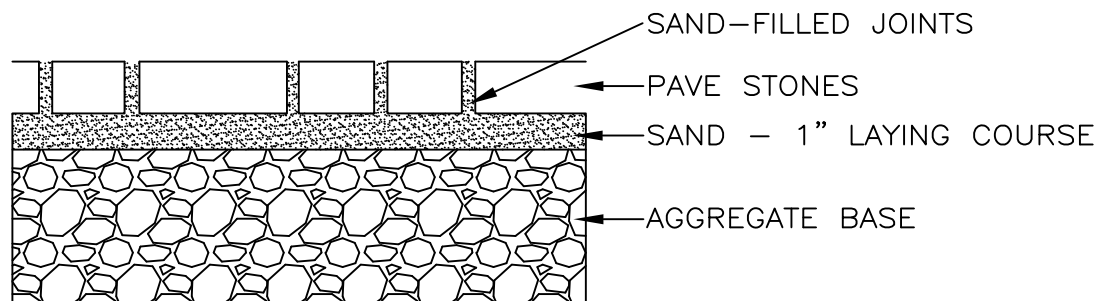
1. PLAZA I (40%), PLAZA II (40%) AND GIANT HERITAGE (10%)



2. PLAZA I (50%), PLAZA II (50%)



TYPICAL CROSS SECTION OF CONCRETE PAVE STONE INSTALLATION

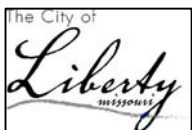


INSTALLATION SHALL CONFORM TO MANUFACTURE'S SPECIFICATIONS

THE COLOR SHALL BE 50% AUTUMN BLEND AND 50% WINTER BLEND

ALL PAVERS SHALL BE SWEEPED WITH SAND AND THOROUGHLY VIBRATED UPON COMPLETION OF LAYING

REV 2009



CITY OF LIBERTY, MO
DEPARTMENT OF
PUBLIC WORKS

TYPICAL
PAVER
INSTALLATION

D14-4a

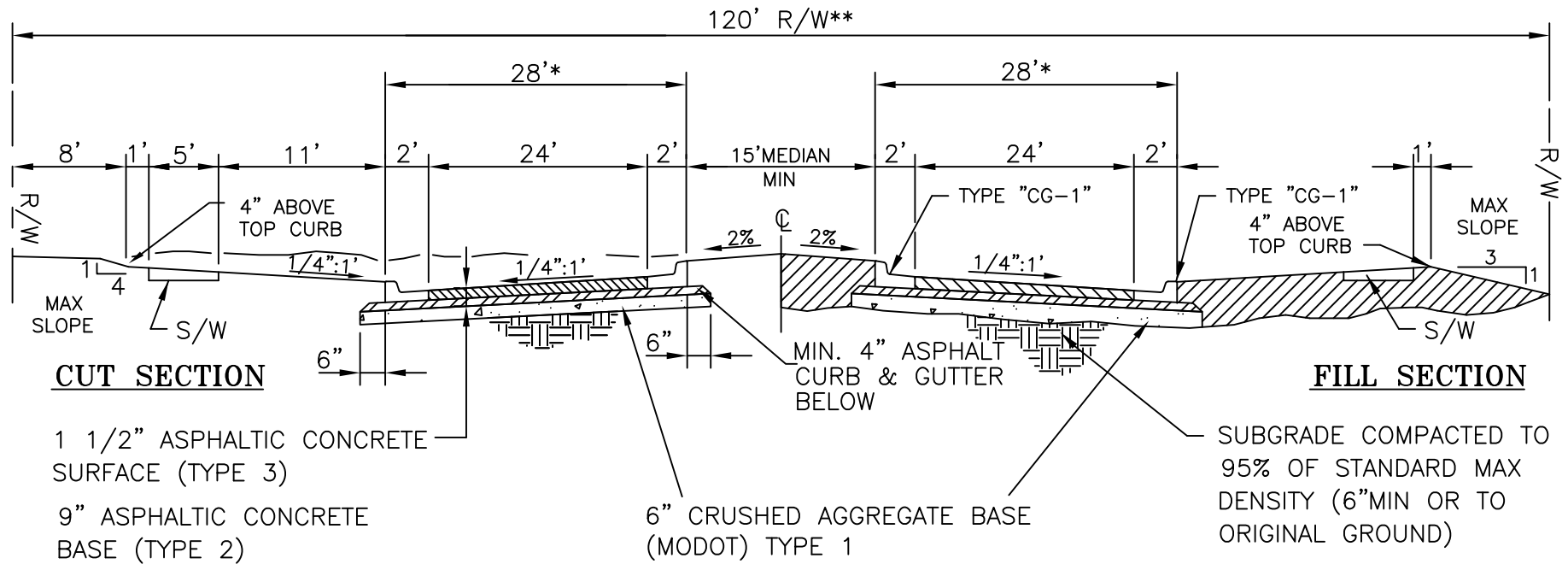


CITY OF LIBERTY, MO
DEPARTMENT OF
PUBLIC WORKS

TOTAL ASPHALT
MAJOR ARTERIAL
STREET DETAIL

D14-5

REV 2016

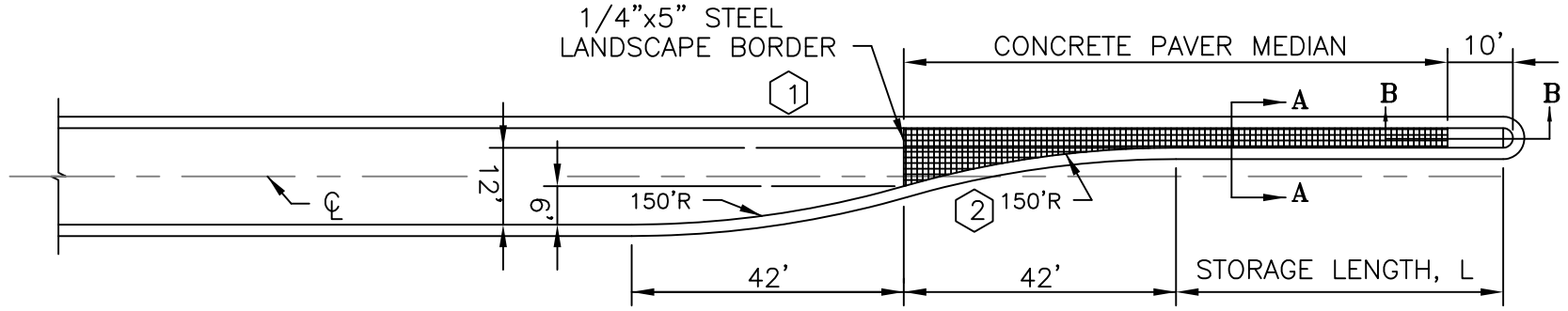


NOTE:

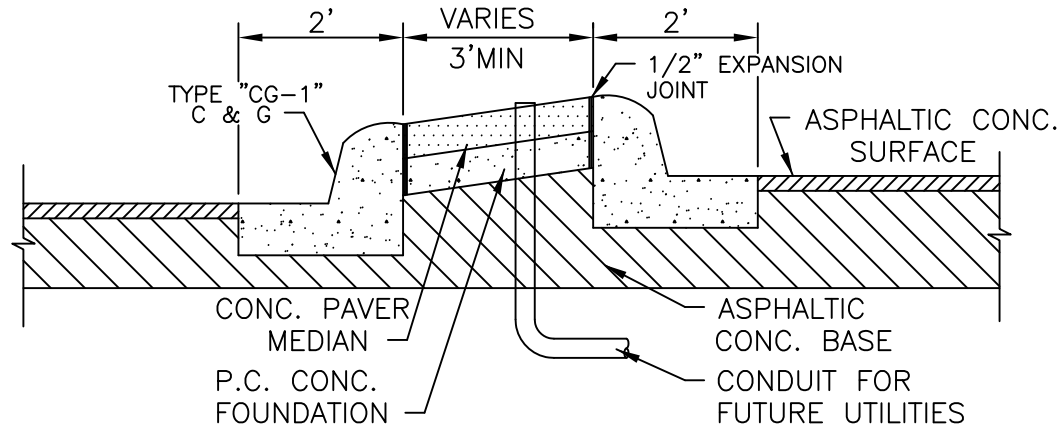
1. ASPHALTIC CONCRETE BASE MIX SHALL BE TYPE 2 UNLESS OTHERWISE APPROVED BY THE CITY ENGINEER.
2. SIDEWALKS TO BE CONSTRUCTED ALONG MAJOR ARTERIAL AS PART OF PROJECT.

* WIDTH MAY VARY BASED ON APPROVED SUBDIVISION DESIGN.

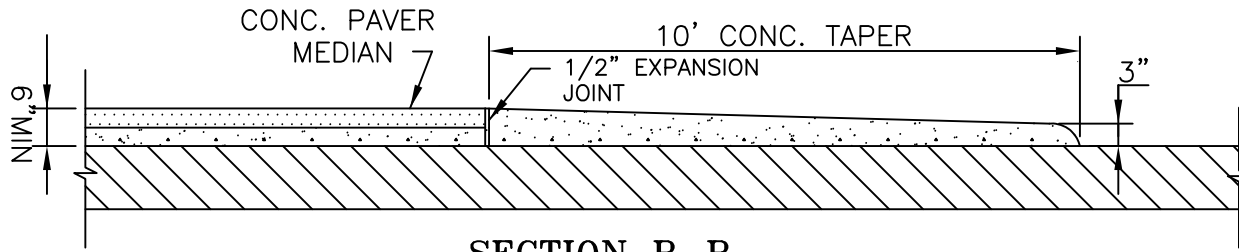
** REQUIRED RIGHT-OF-WAY WIDTH SHALL BE DETERMINED ON A CASE BY CASE BASIS.



TYPICAL LEFT TURN LANE



SECTION A-A

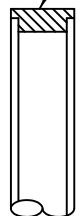


SECTION B-B

CURVE INFO

①	A= 42.14
	C= 42.00
	Δ= 16.10
	R= 150.00
	T= 21.21
②	A= 42.14
	C= 42.00
	Δ= 16.10
	R= 150.00
	T= 21.21

CAP OR PLUG CONDUIT



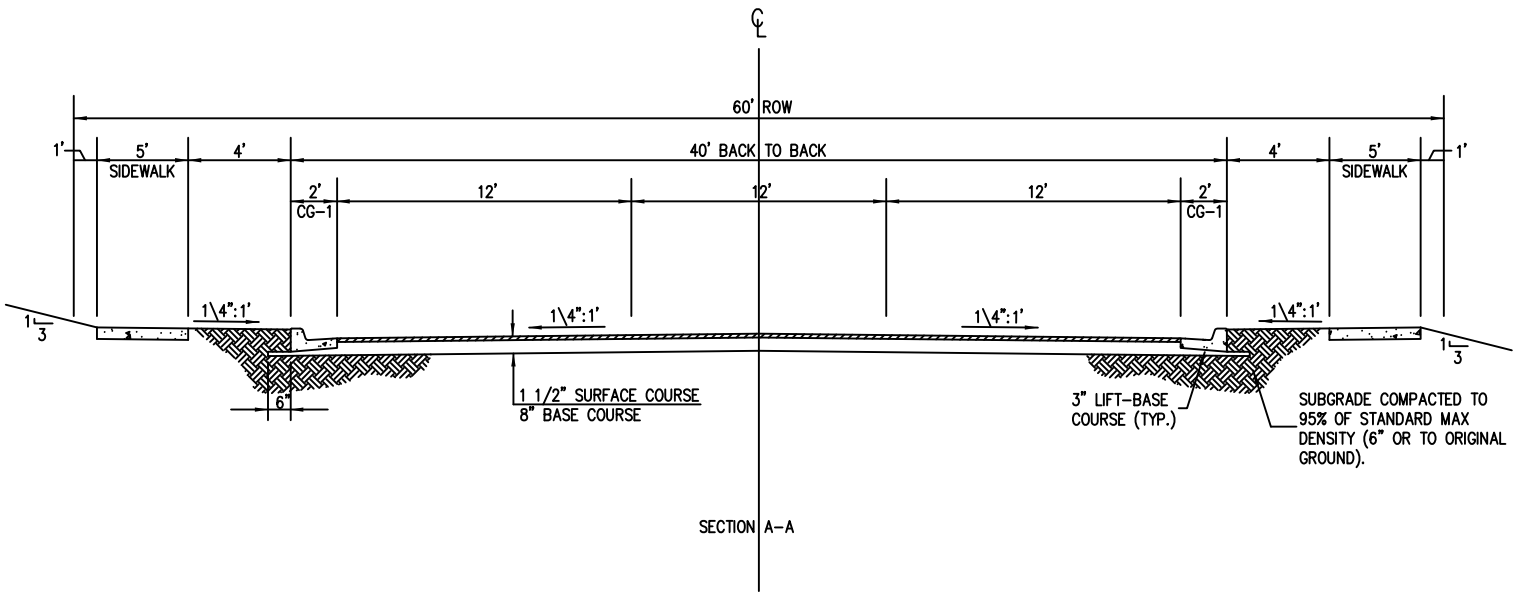
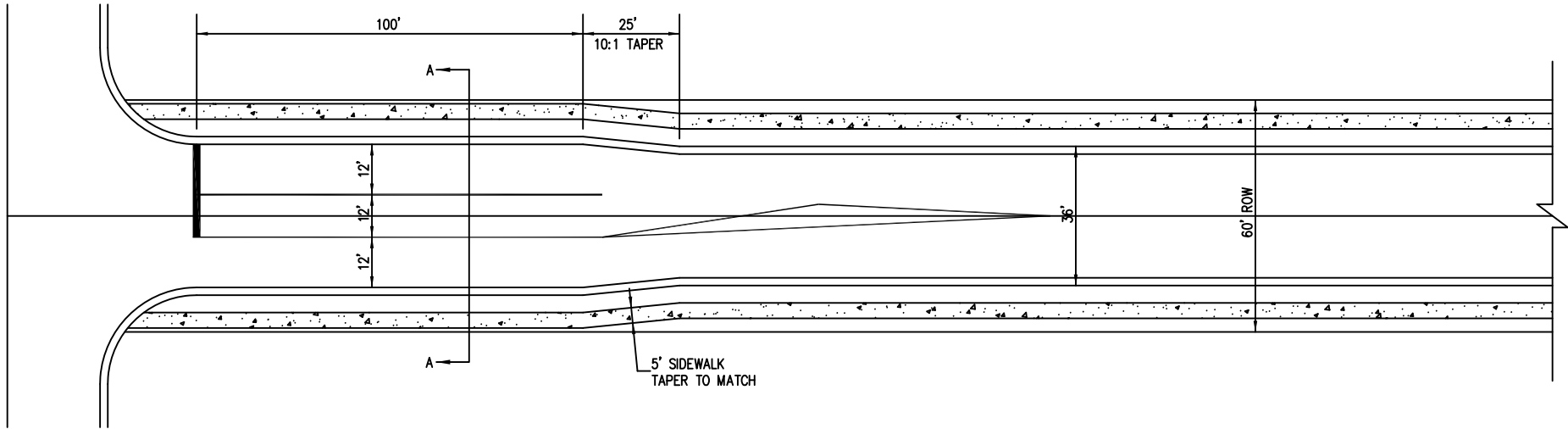


CITY OF LIBERTY, MO
DEPARTMENT OF
PUBLIC WORKS

COLLECTOR/COMMERCIAL
PLAN & PROFILE
TURN LANE

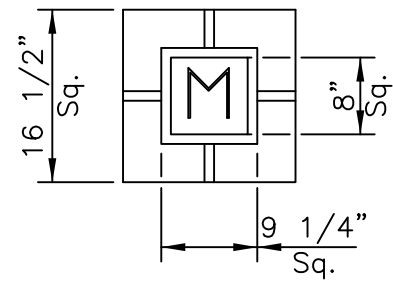
D14-7

REV 2009



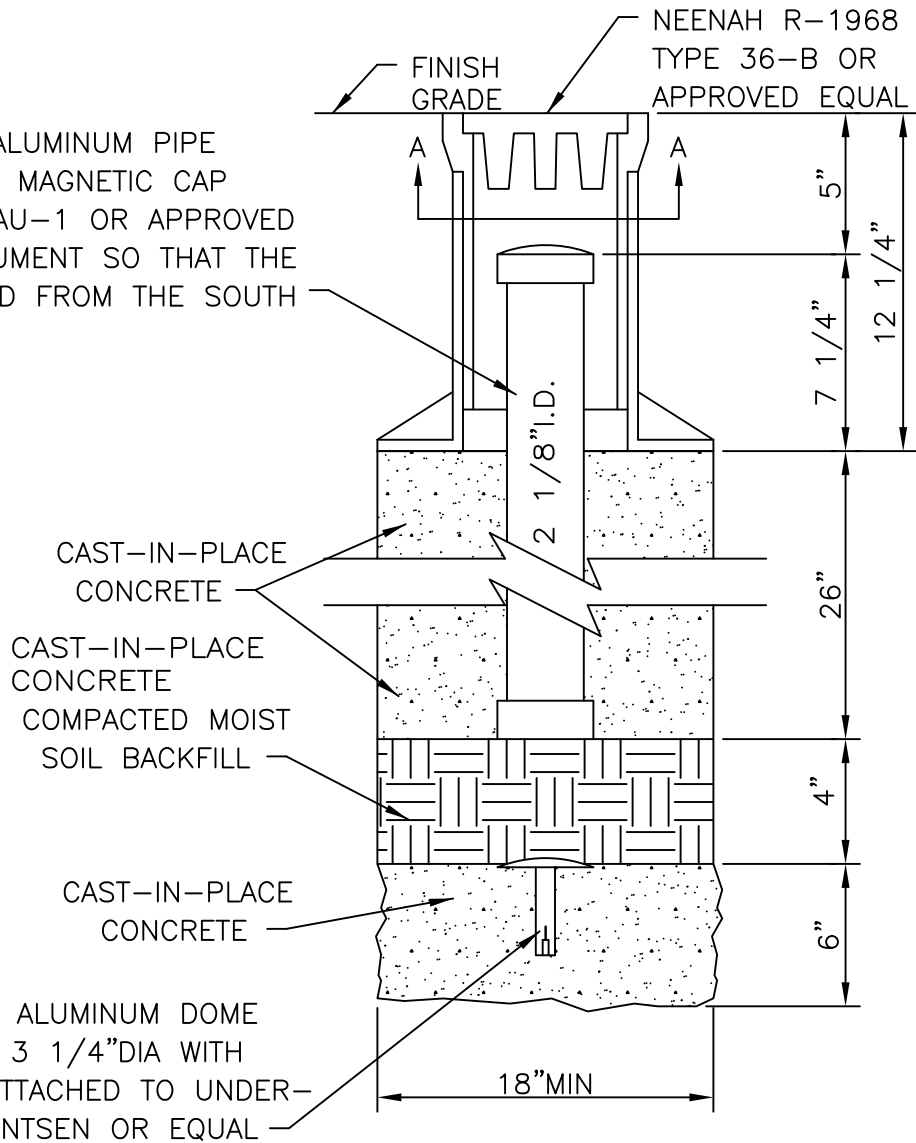
NOTE:

CAP FURNISHED BY CONTRACTOR.
SECTION MARKER TO HAVE
TOWNSHIP AND RANGE STAMPED
ON THE TOP WITH TRUE SECTION
CORNER ETCHED ON THE SURFACE
BY SURVEYOR LICENSED IN THE
STATE OF MISSOURI.



DETAIL A-A

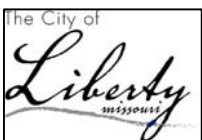
30" STANDARD ALUMINUM PIPE
MONUMENT WITH MAGNETIC CAP
BERNTSEN TYPE AU-1 OR APPROVED
EQUAL. SET MONUMENT SO THAT THE
CAP CAN BE READ FROM THE SOUTH



STANDARD LAND CORNER MONUMENT

(NO SCALE)

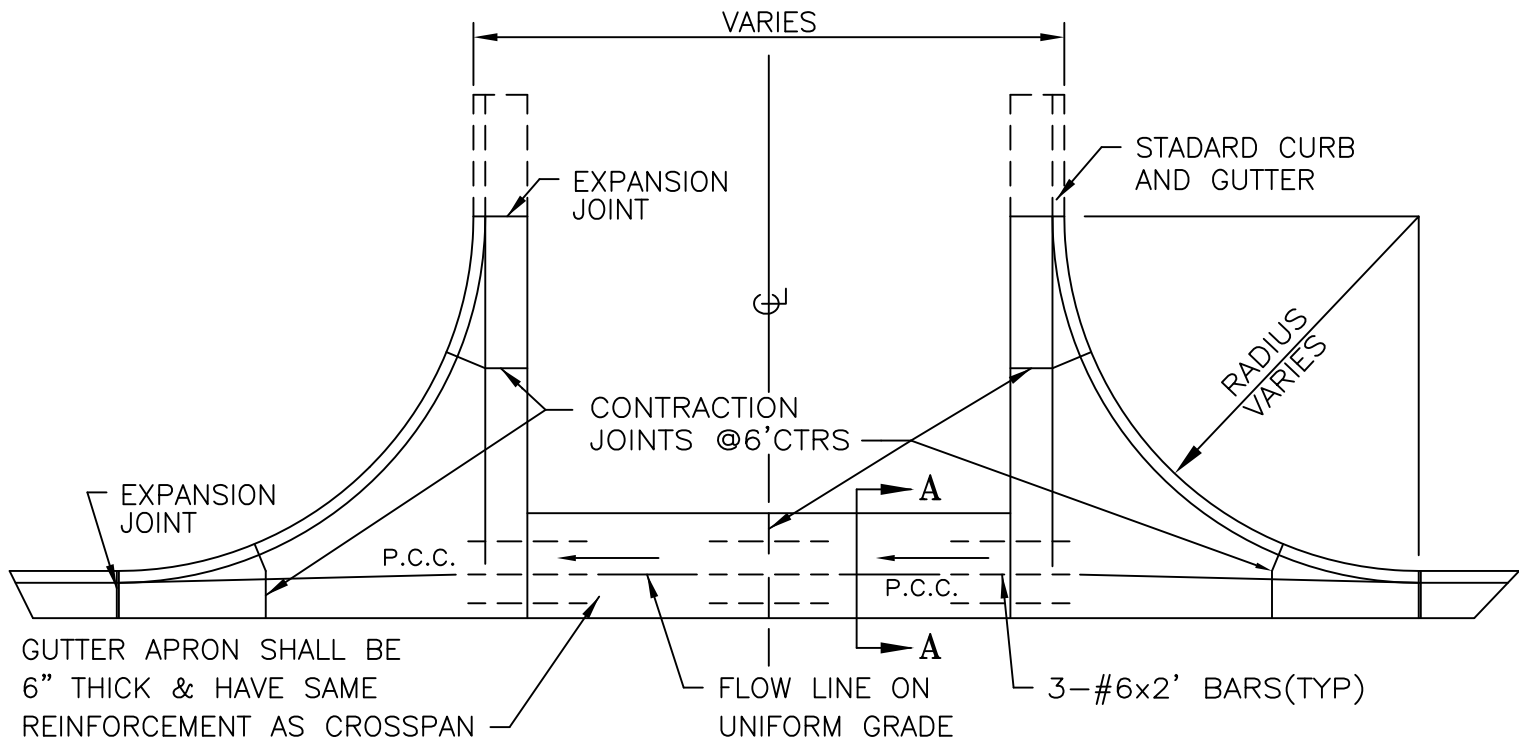
REV 2009



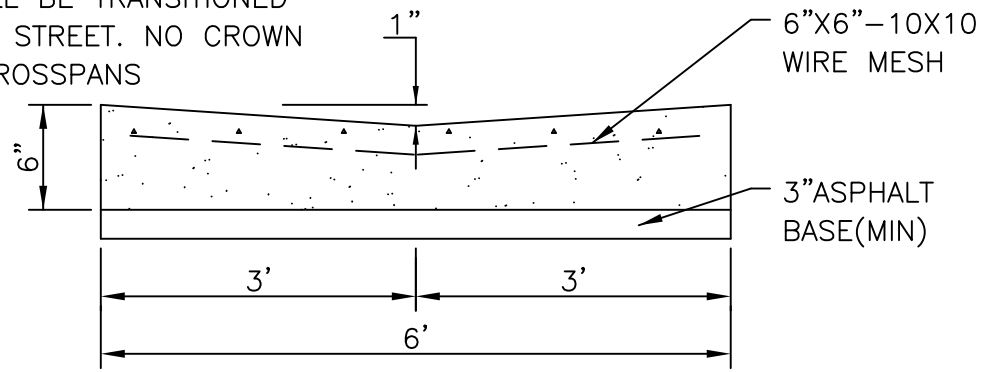
CITY OF LIBERTY, MO
DEPARTMENT OF
PUBLIC WORKS

MONUMENT BOX
DETAIL

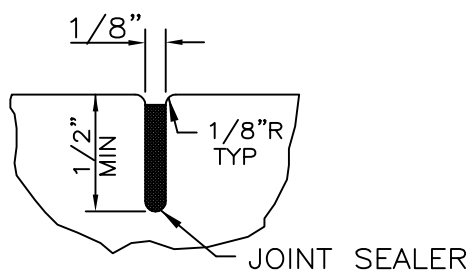
D14-8



CROWN SHALL BE TRANSITIONED OUT OF THE STREET. NO CROWN EXISTS IN CROSSPANS



SECTION A-A



CONTRACTION JOINT

NOTE:
 CROSS PAN DETAIL SHALL BE USED AT ALL LOCATIONS WHERE DRAINAGE TO BE TRANSPORTED ACROSS RETURN WITH LONGITUDINAL SLOPE OF ROADWAY BETWEEN .5% & 1% UNLESS OTHERWISE DIRECTED BY THE CITY ENGINEER.

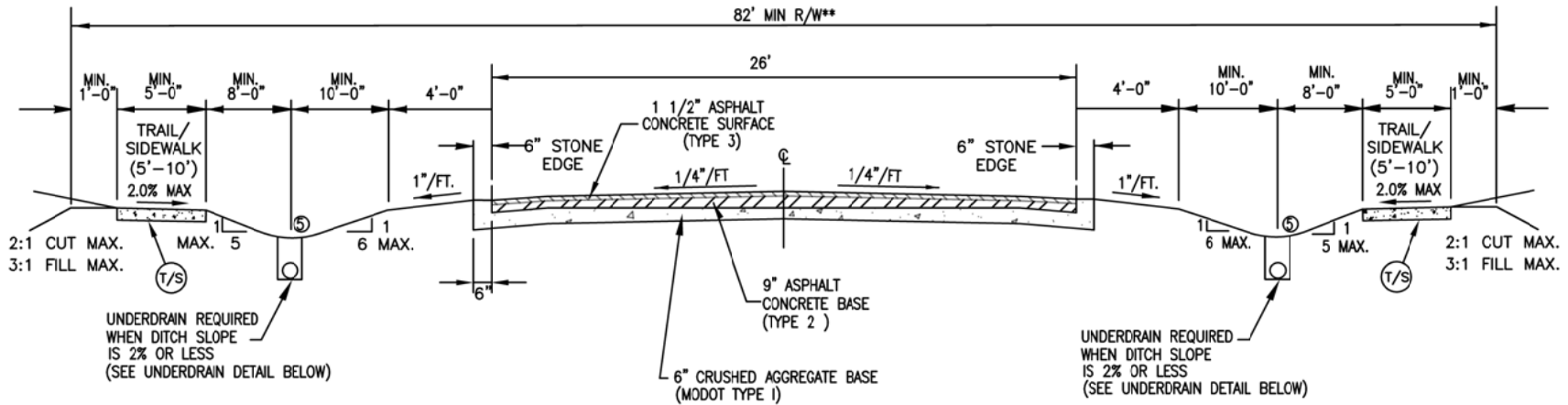
FOR USE WITH ASPH. CONC. END RETURNS REV 2009



CITY OF LIBERTY, MO
 DEPARTMENT OF
 PUBLIC WORKS

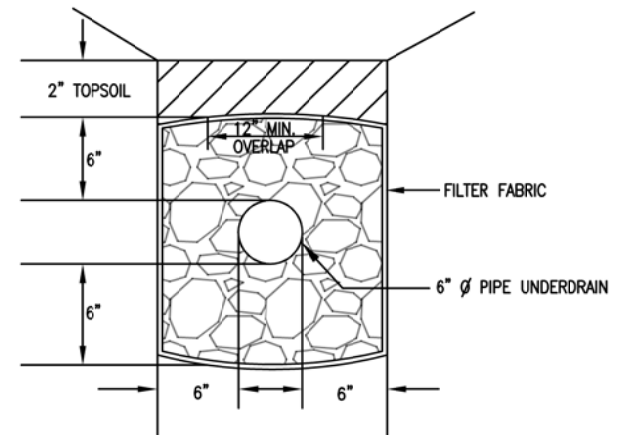
CROSS PAN DETAIL

D14-9



NOTES:

1. DESIGN GEOMETRICS TO BE APPROVED BY THE CITY ENGINEER FOR EACH INDIVIDUAL PROJECT.
 2. UNLESS OTHERWISE APPROVED IN WRITING BY THE CITY ENGINEER BASE MIX SHALL BE TYPE 2.
 3. SIDEWALKS TO BE CONSTRUCTED ALONG THE ROADWAY AS PART OF PROJECT.
 4. APPLICABLE FOR THE FOLLOWING ROADWAYS ONLY:
 - * N LIGHTBURNE ST (FROM DONIPHAN ST NORTH TO CITY LIMITS)
 - * ROUTE H (FROM R.E. BOWLES/MILL EAST TO CITY LIMITS)
 - * ROUTE B (FROM ROUTE H/ROUTE B INTERSECTION NORTH TO CITY LIMITS)
 - * SOUTHVIEW DR (FROM CLAYWOODS DR SOUTH TO RUTH EWING RD)
 - * OLD 210 HWY (FROM 291 HWY EAST TO CITY LIMITS)
 - * N CHURCH RD (FROM CITY LIMITS SOUTH TO KANSAS ST)
 - * GLENN HENDREN DR (FROM N LIGHTBURNE ST SOUTH TO NASHUA RD)
 - * S STEWART RD (FROM SW PROPERTY LINE OF LIBERTY COMMONS SOUTH TO CITY LIMITS)
 - * EDGAR PETTY RD (FROM CITY LIMITS SOUTH TO 69 HWY)
 5. ONCE DEPTH OF DITCH IS WITHIN 4" OF THE PAVEMENT EDGE DURING A 25-YEAR STORM EVENT, A MINIMUM 5' WIDE FLAT BOTTOM DITCH IS REQUIRED TO EXPAND CAPACITY.
 5. MINIMUM STANDARDS AS ESTABLISHED FOR A MINOR ARTERIAL SHALL BE MET REGARDING VERTICAL AND HORIZONTAL GEOMETRY, DESIGN SPEED, DRIVE SPACING, PARKING AND PAVEMENT MARKING.
- (T/S) SIDEWALK OR TRAIL WHEN IDENTIFIED ON TRAIL MASTER PLAN.
- * ROAD WIDTH MAY VARY BASED ON APPROVED SUBDIVISION DESIGN. BUT SHALL BE 26' MINIMUM FROM EDGE TO EDGE.
- ** REQUIRED RIGHT-OF-WAY WIDTH SHALL BE DETERMINED ON A CASE BY CASE BASIS. BUT SHALL BE 82' MINIMUM.



UNDERDRAIN DETAIL

NOTES: UNDERDRAIN DETAIL

1. UNDERDRAIN PIPE SHALL BE INSTALLED WITH THE PERFORATIONS PLACED DOWN.
2. ALL FILTER FABRIC USED FOR PIPE UNDERDRAIN CONSTRUCTION SHALL CONFORM TO KCAPWA STANDARD SPECIFICATIONS SECTION 2203.6
3. THE CONTRACTOR MAY, AT HIS OPTION, USE OTHER PIPE UNDERDRAIN, BUT SHALL NOT MIX UNDERDRAIN TYPES WITHIN ANY UNDERDRAIN SYSTEM.
4. ALL EDGE UNDERDRAIN SHALL BE HELD IN THE CENTER OF THE TRENCH BY MECHANICAL METHODS WHILE PLACING GRANULAR BACKFILL. SEE DETAIL THIS SHEET. ALTERNATE METHODS MAY BE USED WITH PRIOR APPROVAL BY THE CITY ENGINEER.
5. BLANKET UNDERDRAIN AGGREGATE, PIPE UNDERDRAIN AGGREGATE, PIPE UNDERDRAIN, EDGE UNDERDRAIN AND OUTLET PIPE SHALL CONFORM TO KCAPWA STANDARD SPECIFICATIONS SECTION 2203.6